

ALL REZ

SPONSORSHIP OPPORTUNITIES



Experimental Museology: Centering Reciprocity
through Creative Place-Making



“Aye...that’s all rez.”

At its core, *ALL REZ* is the act of returning home and celebrating the beauty, strength, and vitality found in our backyard. It is an opportunity to remember, listen, and embody a curated moment between Diné photography and oral history.

It is a reservation-based phenomenon developed with creative placemaking, visual sovereignty, cultural stewardship, and intergenerational storytelling in heart, mind, and spirit.

It is “all rez” and it is about recognizing and honoring our relationships with land, home, kinship, and life.

- Rapheal Begay (Diné)



Cover image: Rapheal Begay, *Loom (Tó Nehelíh - Tonalea, AZ)*, 2022.

PRESS RELEASE

ALL REZ: K'éyah, Hooghan, K'é, Iná / Land, Home, Kinship, Life

On view at the Maxwell Museum of Anthropology

May 4 to July 27, 2024



Kickoff celebration with Axle Contemporary
at the Maxwell Museum



June 1, 2024 4–7pm

On the road with Axle Contemporary

June 6 through 29, 2024

The Maxwell Museum of Anthropology at the University of New Mexico and Axle Contemporary are proud to announce a partnership with Diné photographer Rapheal Begay and independent curator Lillia McEnaney. *ALL REZ: K'éyah, Hooghan, K'é, Iná / Land, Home, Kinship, Life* is a **traveling, site-specific, experimental photography exhibition and museological project**.

While the Maxwell will feature an installation of Begay's photography documenting his perspectives of these cultural themes within the landscape, the traveling portion of *ALL REZ* will take Begay's photographs back to his home community in the Axle Contemporary mobile artspace. The interior of the truck will be transformed into a welcoming space for reflection and conversation with the artist about his photographs and the cultural content held therein. As **an exercise in creative place-making with the goal of fostering active storytelling**, *ALL REZ* centers the voices and experiences of Diné community members, offering a reciprocal process of exhibition-making.

The Maxwell Museum invites you to keep in touch with the project team while they are on the road. Updates will be provided regularly on the monitor in our gallery for real-time engagement with the project. We also welcome you to stay in touch through the project website (www.allrez.net).

Rapheal Begay is a visual storyteller based in the Navajo Nation. Informed by cultural teachings and land-based knowledge, he activates landscape photography and oral storytelling traditions to document and celebrate the Diné way of life.

Housed in a custom retrofitted 1970 aluminum delivery truck, **Axle Contemporary** is an art gallery on wheels that activates unusual venues, such as schools, restaurants, grocery stores, and city streets, thus, expanding artists' reach to diverse communities.

Through cutting edge research, exhibitions, community partnerships, and educational programs, the **Maxwell Museum of Anthropology** is *working toward greater understandings of the fullness of human experiences in the Southwest and the world*.

Lillia McEnaney is a museum anthropologist, independent curator, and freelance arts writer based in Santa Fe, New Mexico.

For media inquiries, please contact exhibition co-curator and project manager,
Lillia McEnaney. (mcenaneylillia@gmail.com).



ALL REZ

K'éyah, Hooghan, K'é, liná



Land, Home, Kinship, Life

Since the advent of photography, Indigenous peoples have been romanticized by both photographers and viewers as “authentic,” “primitive,” and members of a “vanishing race.” This history is inseparably linked to the histories of museums and science, in which curators, artists, anthropologists, and sociologists took Indigenous peoples’ belongings and stories, captured their images and recorded their voices; and fundamentally attempted to strip away their sovereign sense of identity, community, and belonging.

These harmful processes were grounded in Darwinian social thought, which wrongfully characterized Indigenous peoples as embodying a lower level of evolution, and thus fated to extinction through natural selection. This legacy of discrimination is still present throughout academic structures, museums, and arts spaces across the United States.

Within the past two to three decades, Indigenous photographers are—finally—becoming recognized as active participants in the telling of their own stories, and Diné photographer Rapheal Begay is taking a leading role in this movement. In 2019, the Maxwell Museum opened *A Vernacular Response*, the first solo exhibition of Begay’s work. This exhibition introduced visitors to the artist’s vision of his home and community. *ALL REZ* is an experimental extension of this first project.

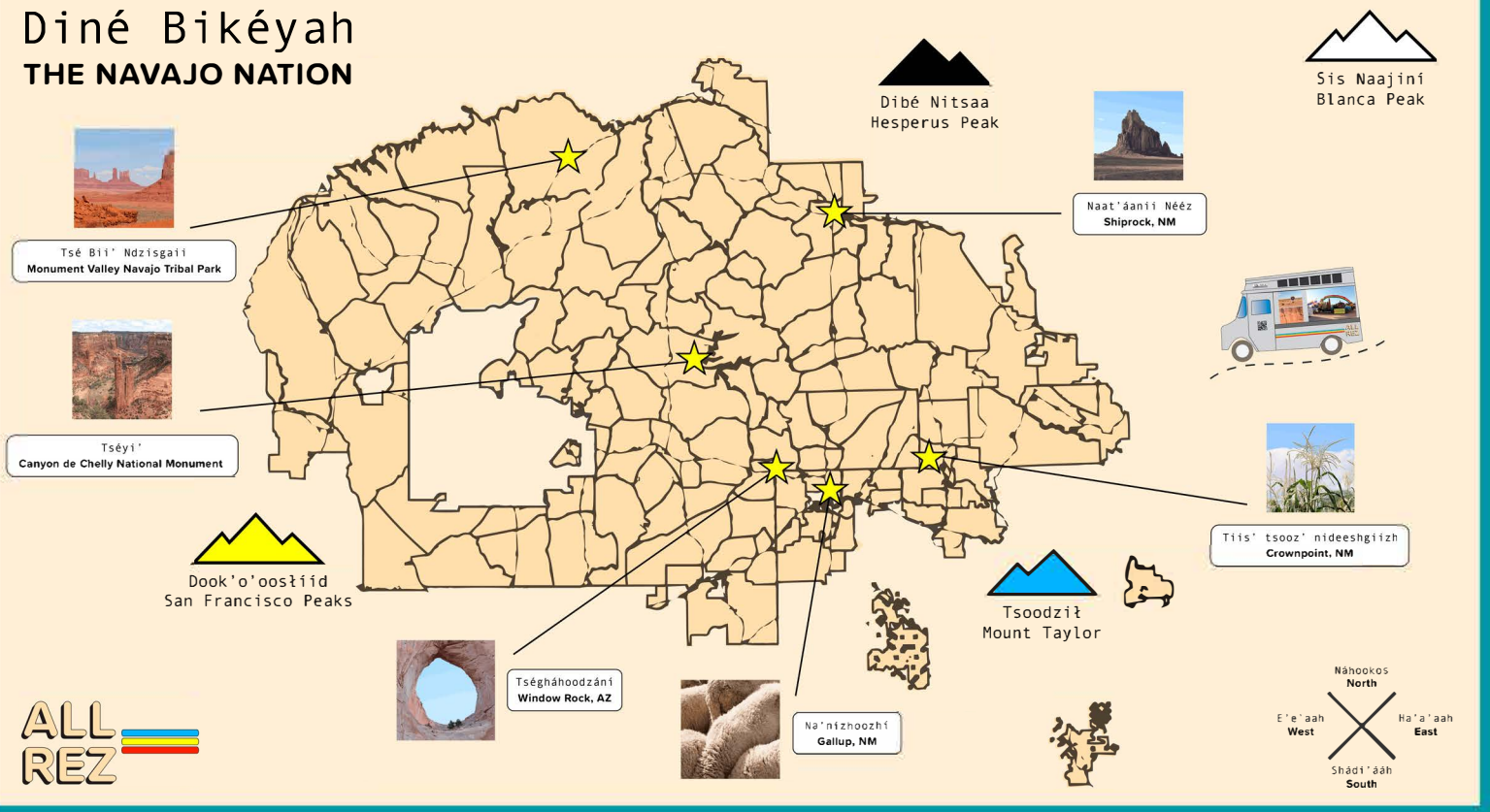
In addition to charting a new course for the future of photography, *ALL REZ* also aims to be a model for future museology, where Indigenous community members not only shape exhibitions, but through which the museum is brought to and shaped by the communities who are the subjects of ongoing settler colonial violence.

- Lillia McEnaney

Opposite page (clockwise from top left): *Thirst Quenchin’* (Ni’iijíni’ - Navajo, NM), 2017; *Navel* (Tsé Náshchii’ - Hunter’s Point, AZ), 2017; *Emergence* (Naakaii Tó - Mexican Water, AZ), 2018; *Shi Heart* (Blue Canyon, AZ), 2017; *Rez Dog* (Tsé Náshchii’ - Hunter’s Point, AZ), 2017. All photographs by Rapheal Begay.



Diné Bikéyah THE NAVAJO NATION



ITINERARY

- 5/4/24** Exhibit Opening at the Maxwell Museum, Albuquerque, NM
- 6/1/24** Kick Off Celebration with the Axle Truck at the Maxwell Museum
- 6/7/24** Crownpoint Rug Auction, Crownpoint, NM
- 6/8/24** Gallup Flea Market and Arts Crawl, Gallup, NM
- 6/14/24** Canyon de Chelly National Monument Visitor Center, Chinle, AZ
- 6/15/24** Navajo Nation Museum, Window Rock, AZ
- 6/21/24** Monument Valley NTP Welcome Center, Monument Valley, UT
- 6/22/24** Shiprock Flea Market, Shiprock, NM
- 6/28/24** Farmers Market/SITE Santa Fe, Santa Fe, NM
- 6/29/24** Museum of Indian Arts & Culture/Museum Hill, Santa Fe, NM
- 7/27/24** Exhibit Closing at the Maxwell Museum, Albuquerque, NM

SUPPORT THE PROJECT

For more information on Sponsorship Opportunities, please contact Lillia McEnaney at mcenaneylillia@gmail.com.

Help make this multifaceted exhibit a success with a donation!

ImpactUNM is the fundraising partner for the Maxwell Museum.

To donate, please use this QR code or visit www.allrez.support

Thank you!



Support the project team's travel costs, including hotels, meals, and gas.
(Goal = \$5,000)



Support publicity efforts, such as poster and postcard printing and website maintenance.
(Goal = \$500)



Support the project's concluding exhibition at the Maxwell Museum of Anthropology.
(Goal = \$5,000)



Support the publication of a project catalogue, including design, printing, and distribution to project participants.
(Goal = \$5,000)



Custom Sponsorship Opportunities are available, including in-kind support. Sponsors will be recognized in marketing materials, on the All Rez website, and on the Axle Contemporary Mobile Artspace during the month of June.

ALL REZ is a partnership between Axle Contemporary and the Maxwell Museum of Anthropology at the University of New Mexico with support from the Alfonso Ortiz Center for Intercultural Studies.

